

L914D adapter booting set up

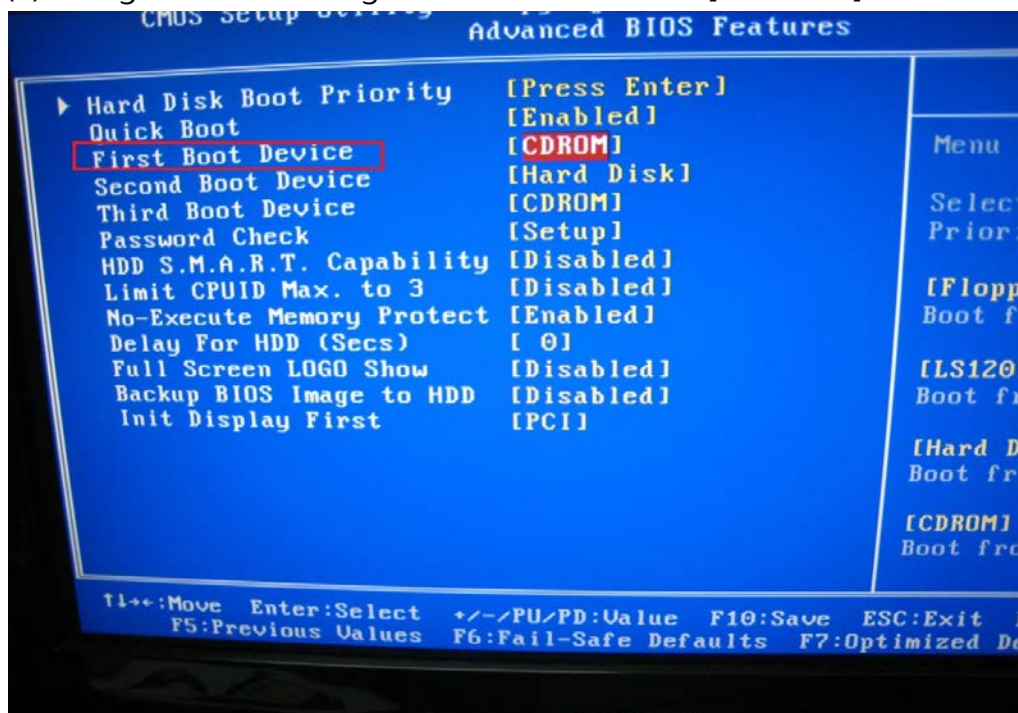
After you insert SD Card into L914D, it becomes a standard 2.5" SSD.

- (1) connect L914D with SATA power cable and signal cable to PC.
- (2) Put Windows XP, or others OS CD disk in CD-ROM.
- (3) Power on PC, BIOS will detect L914D adapter and CD-ROM as below



Remark: L914D is showed as FC-1307 SD to CF adapter...

- (4) Using cursor to change First Boot Device to [CD-ROM]

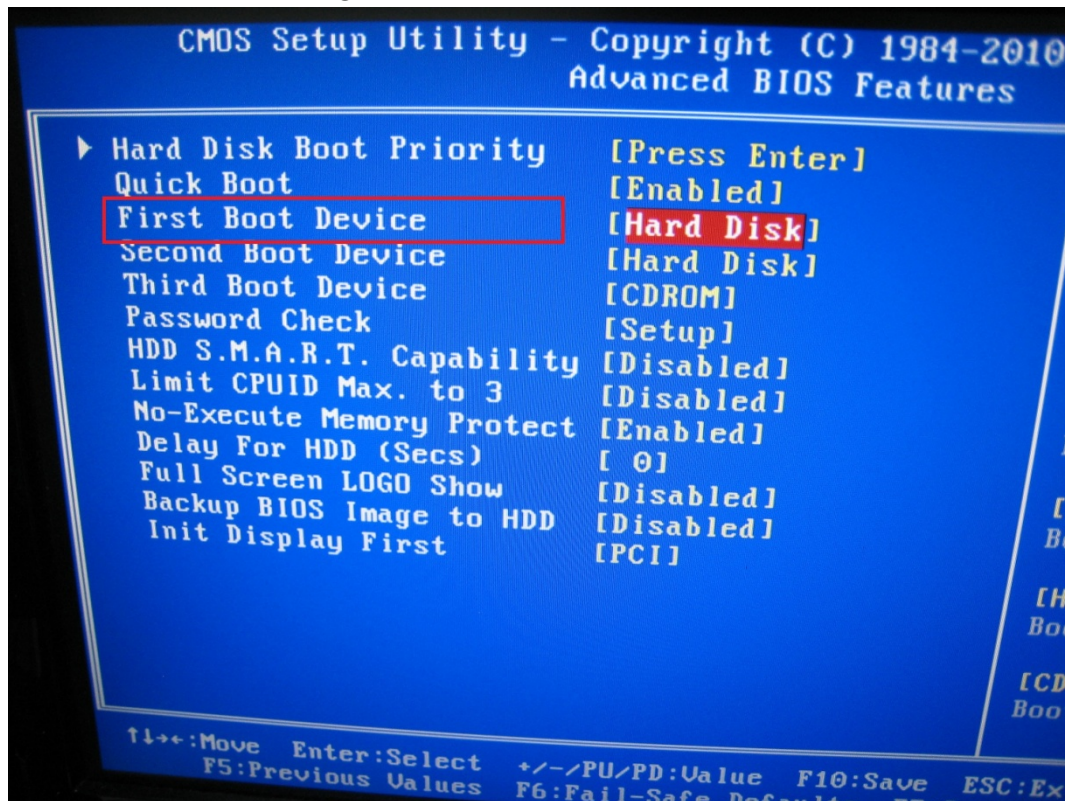


- (5) Press F10 to SAVE
- (6) Press Y, to reboot

Then, start to install OS to FC-1307 (L914D) adapter

When it reminds Re-start, press [delete] into CMOS Setup Utility,
change BOOT SEQUENCE

First Boot Device change to [Hard Disk] as below:



(7) Press F10 to SAVE

(8) Press Y, to reboot

~The end~